

SCREW COMPRESSORS

VRUs or Wellhead Compression



WWW.OTACOMPRESSION.COM



NATURAL GAS / ELECTRIC PACKAGES

- Available from 10HP to 125HP
- Versatile range of pressure to handle most vapor recovery applications
 - Suction pressure: 0 - 30 psig
 - Max discharge pressure to 200 psig
- Flow rate up to 850 mscfd

CAPTURE EFFICIENCY OF 99% OR GREATER

- Low cost maintenance & mechanically friendly
- Reciprocating compressor options also available

FEATURES / OPTIONS

- Class 1 Div 2 rated options
- Auto start and stop/restart
- SCADA ready w/ remote monitoring option
- Optional H₂S (and CO₂) compatible units
- Runtime/Downtime timers for reporting and provability
- Auto dump system
- Precision in ounces or pounds
- Variable Frequency Drive - maximizing efficiency



PRODUCTS & SERVICES

Vapor Recovery, Compression, Environmental & Field Services



VAPOR RECOVERY UNITS (VRUs)

- Natural Gas & Electric Driven Packages (10 - 125HP)
- Class I Division II and H₂S Options Available
- Data Logging Capable / SCADA Ready
- 99% Capture Efficiency
- Lease & Purchase Options



FIELD SERVICES

- Third Party Service on All Unit Types
- 24/7 Availability (Local Presence)
- Certified Mechanics
- Preventative Maintenance Programs
- Meter Calibration
- Experienced and Safety Conscious

LEAK DETECTION AND REPAIR (LDAR)

- OGI and Method 21 (Alternative Screening)
- Pre-Test Inspections
- 3rd Party QA/QC Surveys
- Comprehensive Reports/EPA Annual Reporting



WELLHEAD COMPRESSION

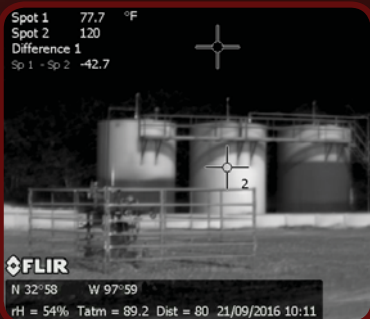
- Lease & Purchase Options
- 10 to 125 HP
- Natural Gas Certified Engine and Electric Options
- SCADA capable

FLARES & COMBUSTORS

- Dual, Single, and Utility Flares. 20 to 125 ft.
- EPA Quad Oa Certified Combustors

EMISSIONS TESTING

- Direct Measurement, GOR/GWR, Simulation
- C10+ Analysis
- Site Inspections (QA/QC)
- Engine Spot Checks



ENVIRONMENTAL COMPLIANCE & REPORTING

- Monitoring, Recordkeeping, and Reporting
- Air Permitting and Regulatory Compliance
- Closed Cover and Vent Systems (CVS) Monitoring
- Method 22